



GEOFRAME
PROCESSED
INTERPRETATION

BestDT*

SonicVision Processing

Run 2: 800m - 1435m (1/500)

* A Mark of Schlumberger

Using the following logs: sonicVision

COMPANY: BEACH PETROLEUM LTD
WELL: PEEJAY-1
FIELD: WILDCAT
RIG: WEST TRITON
STATE: TASMANIA
COUNTRY: AUSTRALIA
Date Logged: 24-NOV-08
Date Processed: 25-Nov-2008

Elevations: KB: 34.15m GL: -78m
API Number: 08ASQ0031

FOLD HERE The well name, location and borehole reference data were furnished by the customer.

All interpretations are opinions based on inferences from electrical or other measurements and we cannot, and do not guarantee the accuracy or correctness of any interpretation, and we shall not, except in the case of gross or willful negligence on our part, be liable or responsible for any loss, costs, damages or expenses incurred or sustained by anyone resulting from any interpretations made by any of our officers, agents or employees. These interpretations are also subject to Clause 4 of our General Terms and Conditions as set out in our current Price Schedule.

Field Recording:	Location:	Software Version: 13X0-101	Engineer: MARGANDA/
Office Recording:	ICS Center: Melbourne	Baseline: GF 4.4 DC2	Log Analyst: A. Datey

Mud and Borehole Measurements:

Rm @ Measured Temperature: @	BHT:	Bitsize: 12.25in
Rmf @ Measured Temperature: @	Type Fluid in Hole:	WATER BASE MUD
Rmc @ Measured Temperature: @	Mud Density: 1.13835g/cm3	

Remarks:

sonicVision 8 run in hole drilled with 12.25" bit.
Data is affected by weak formation arrivals.
See QC log for more details.

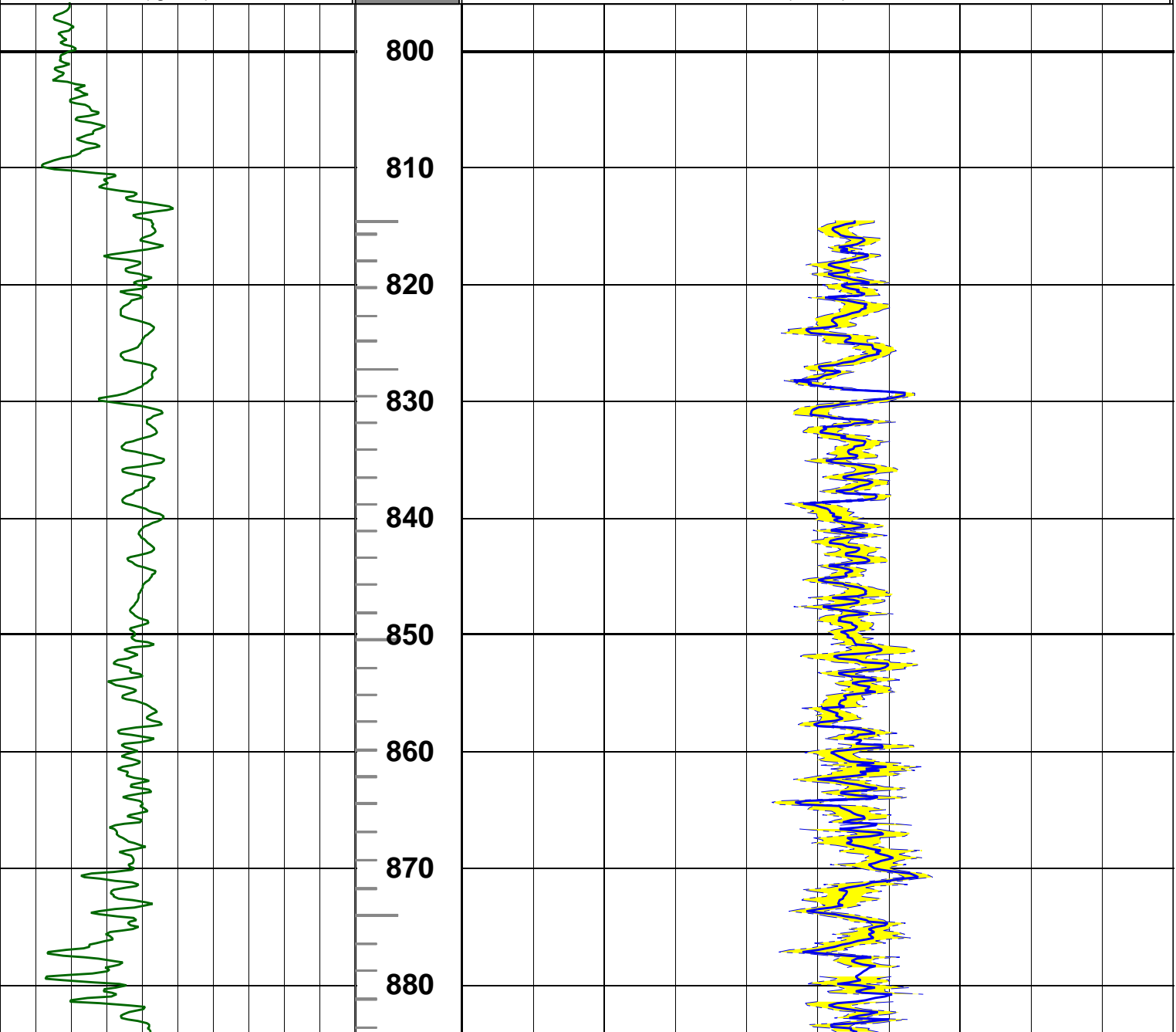
ITT PIPS : Small : 1ms ; Large : 10ms

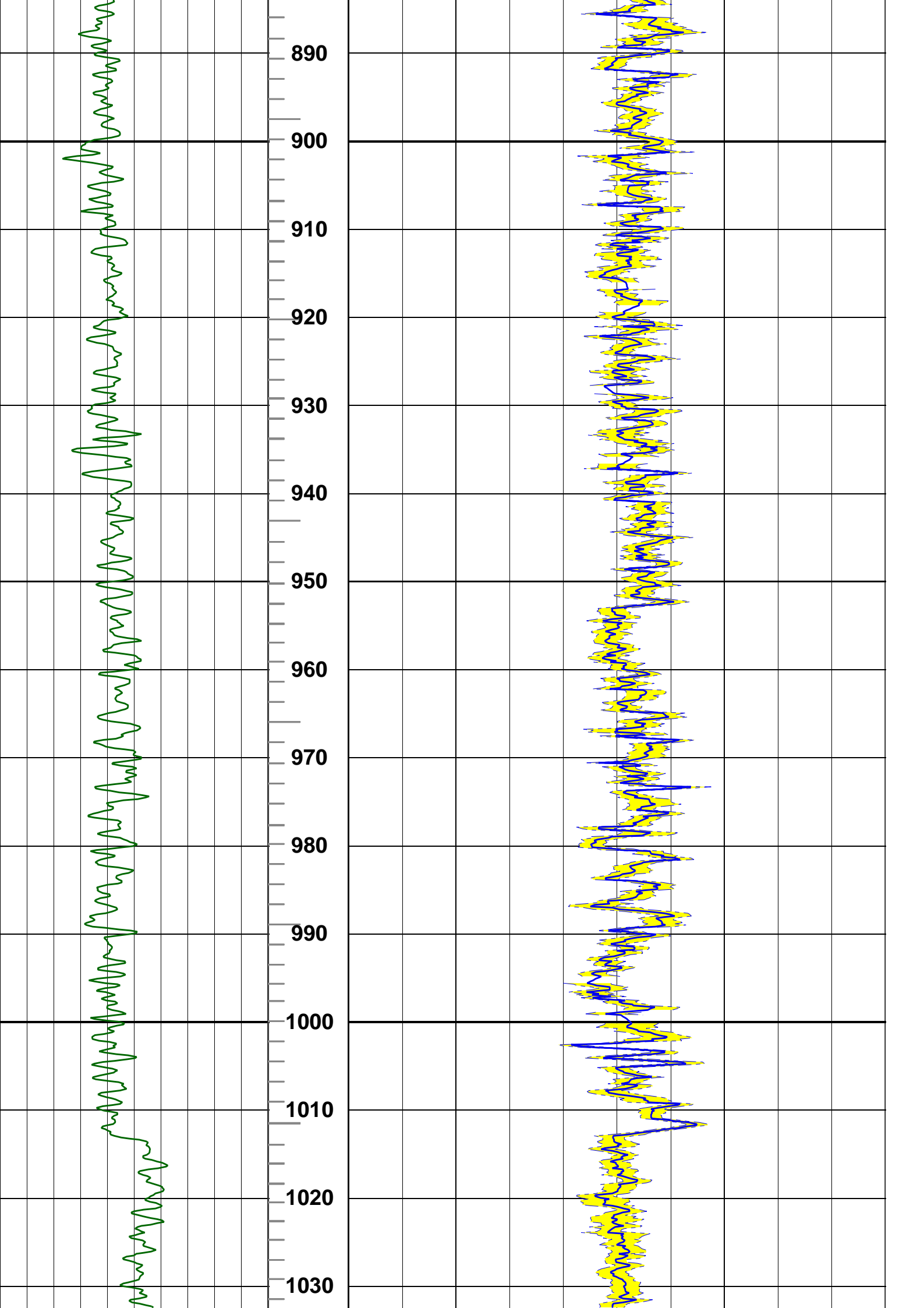
MD
1 : 500
m
ITT
0 () 5

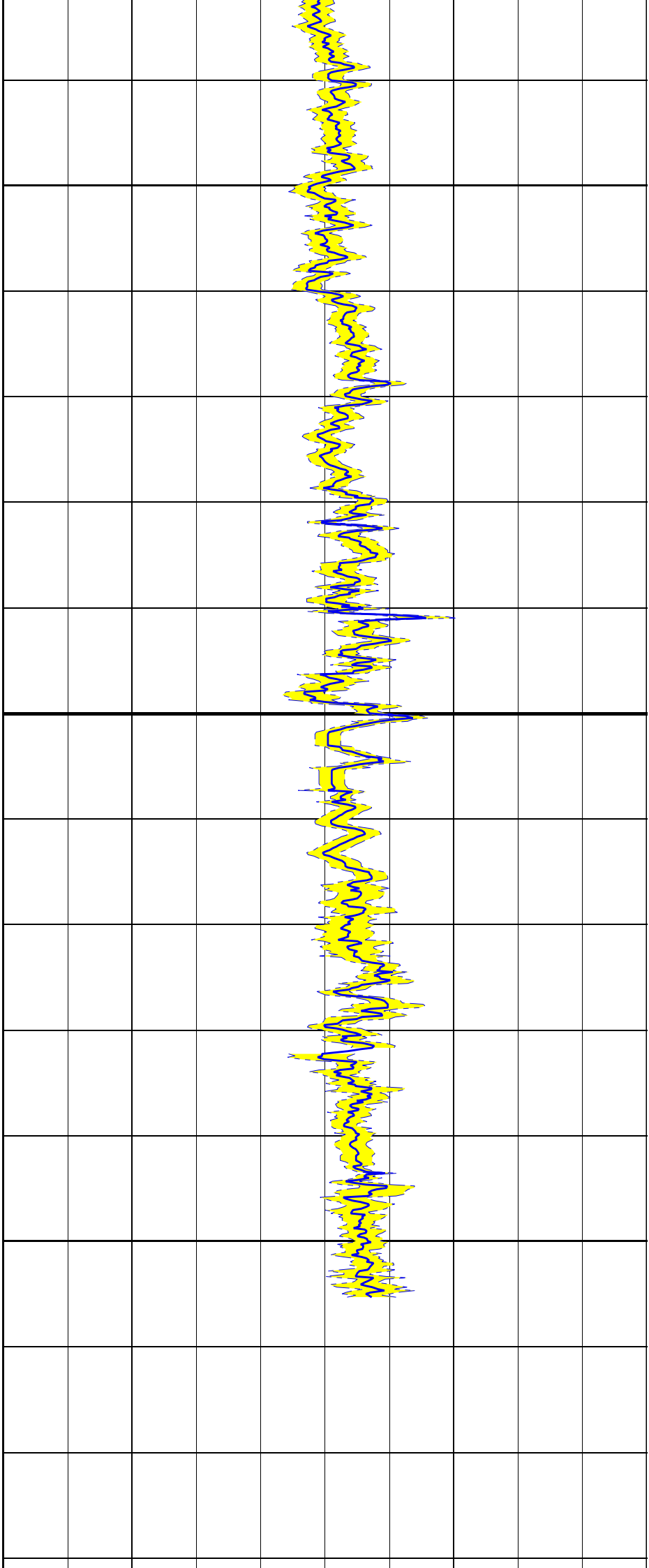
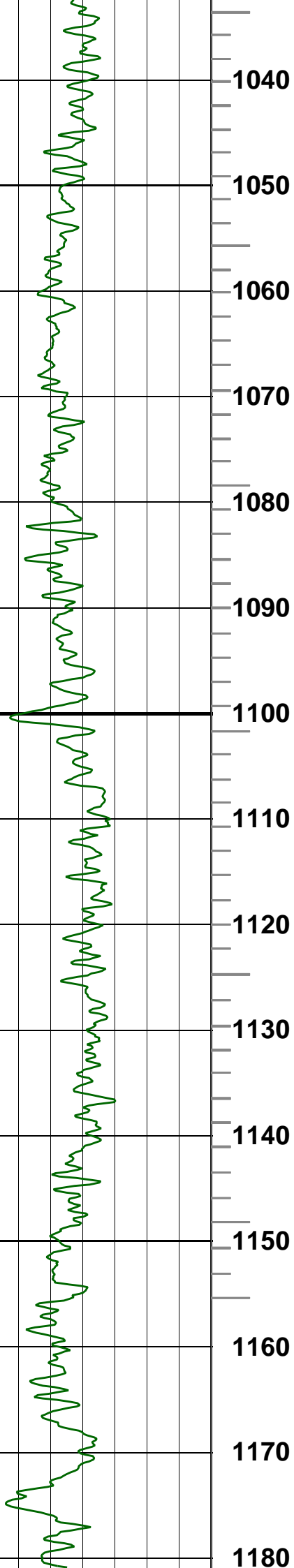
Gamma Ray
0 (gAPI) 150

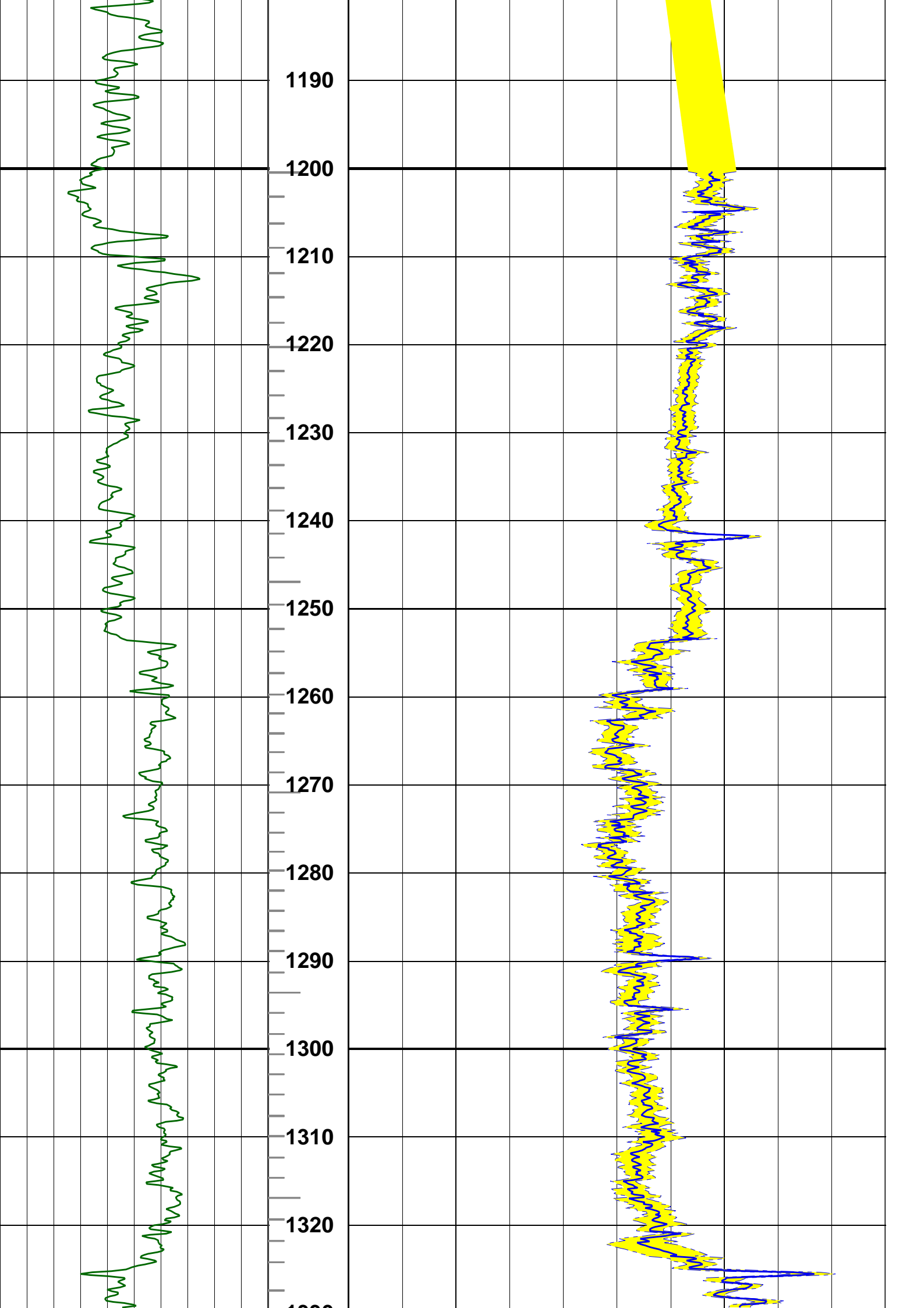
ITT PIP

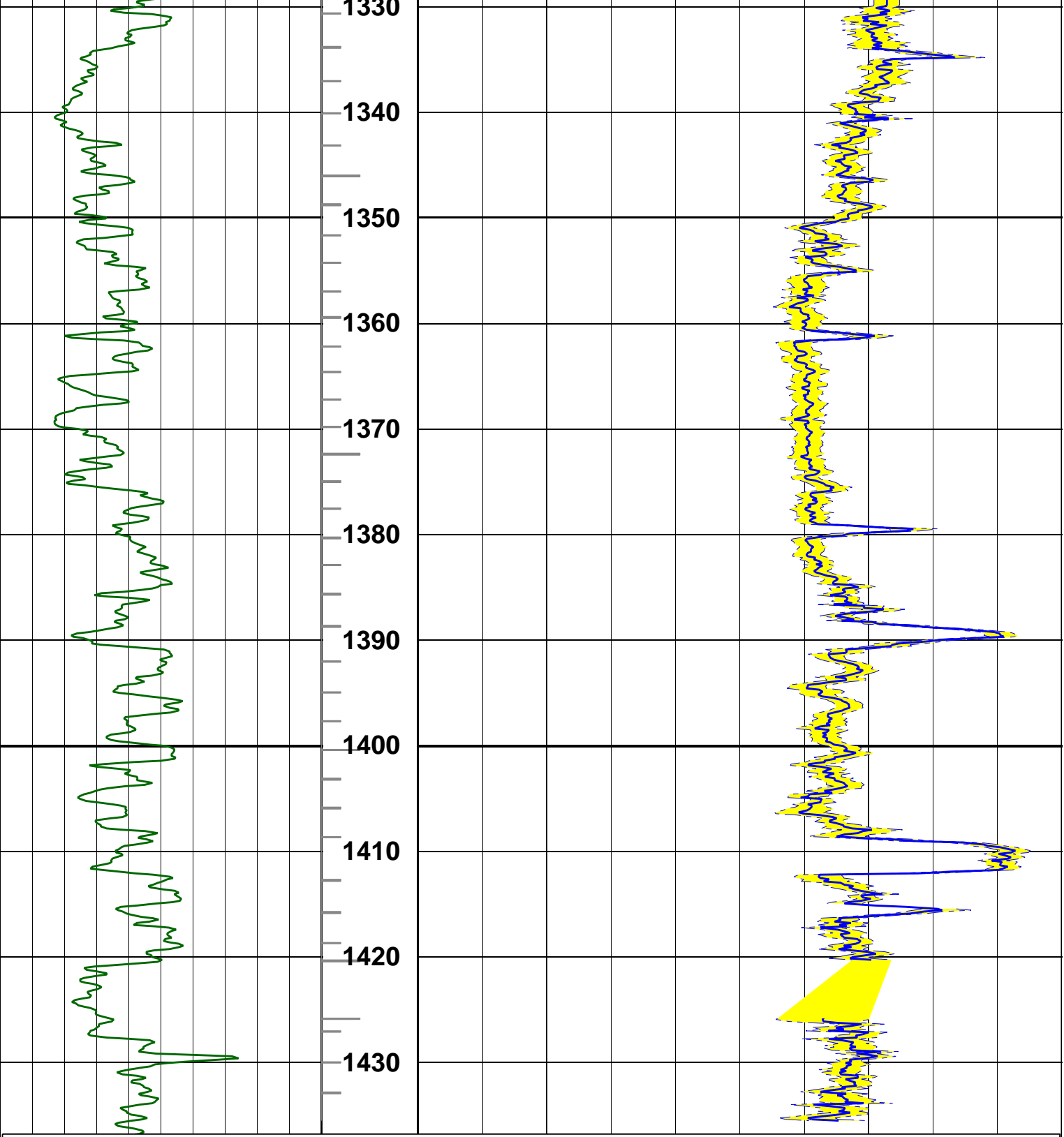
Compressional Delta-T (DTCO)
240 (us/ft) 40











--- Finalization Result ---
 1 MPS Compressional Receiver Absent levels= 1208
 1 MPS Compressional Transmitter Absent levels= 1074
 1 MPS Shear Receiver Absent levels= 4314
 Gamma Ray

0 (gAPI) 150

ITT PIP

Compressional Delta-T (DTCO)
 240 (us/ft) 40

ITT
 0 () 5

MD
1 : 500
m

Monopole Compressional Processing QC

WF VDL

400 (us) 3378

TICS

400 (us) 3378

TISS

400 (us) 3378

SpcRC
0 (Hz) 30000

SpcRS
-15000 (Hz) 15000

CfRC
0 (Hz) 30000

CfRS
-15000 (Hz) 15000

STPrjR
39 (us/ft) 240

DtRC
39 (us/ft) 240

DtRS
39 (us/ft) 240

MD
1 : 500
m

Gamma Ray
0 (gAPI) 150

800

810

820

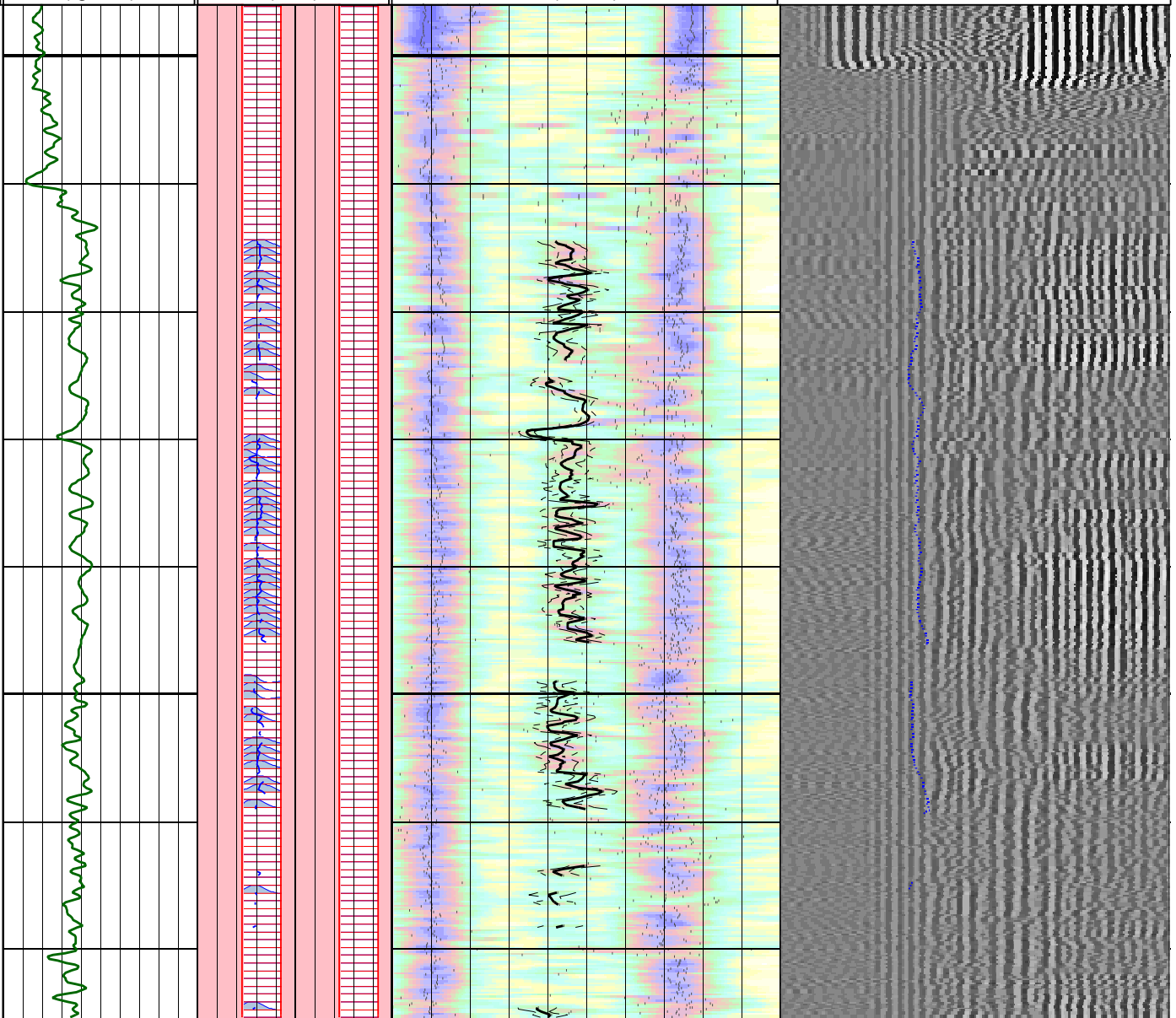
830

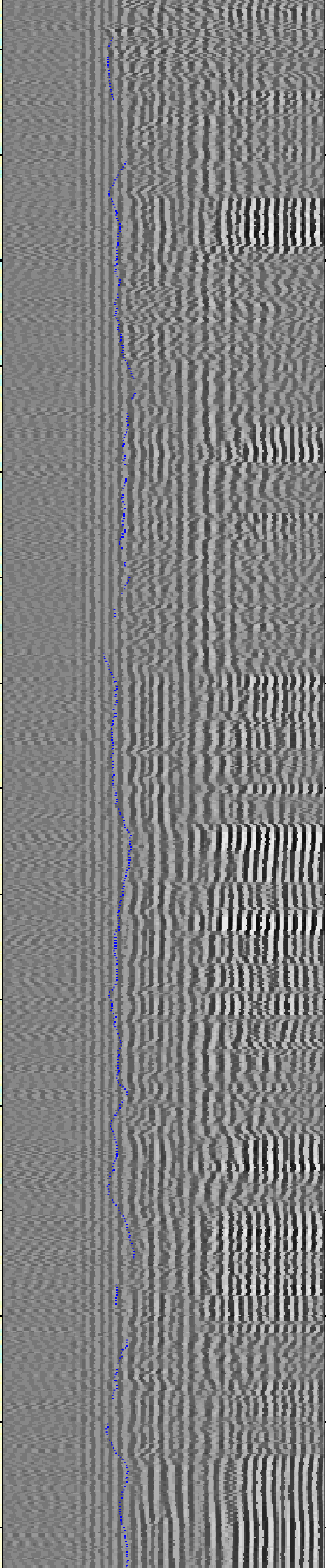
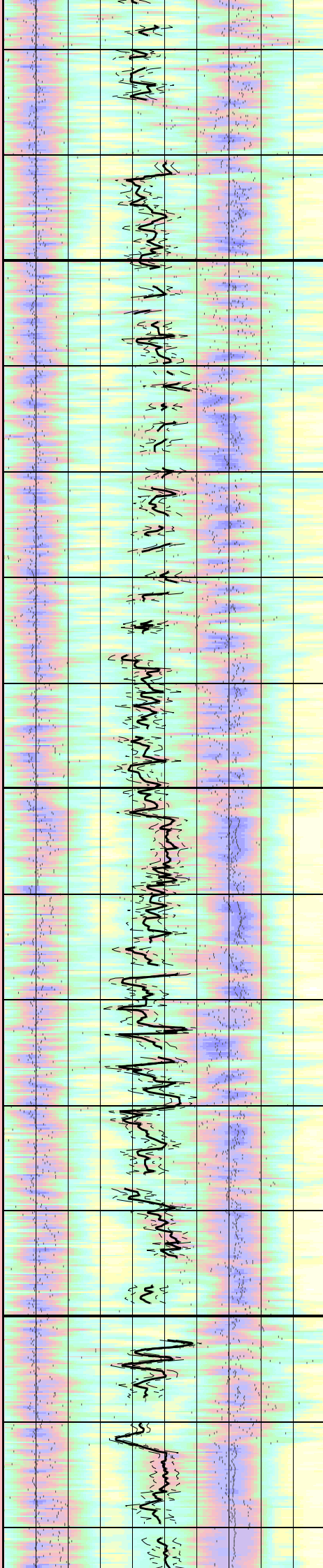
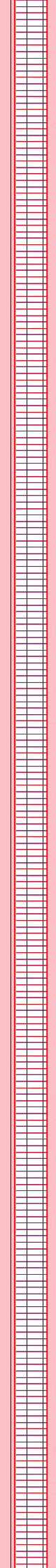
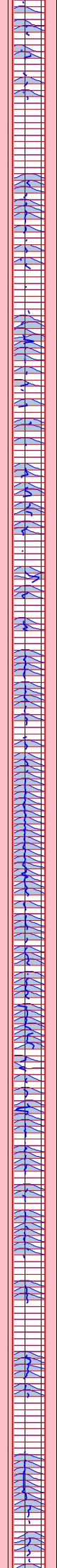
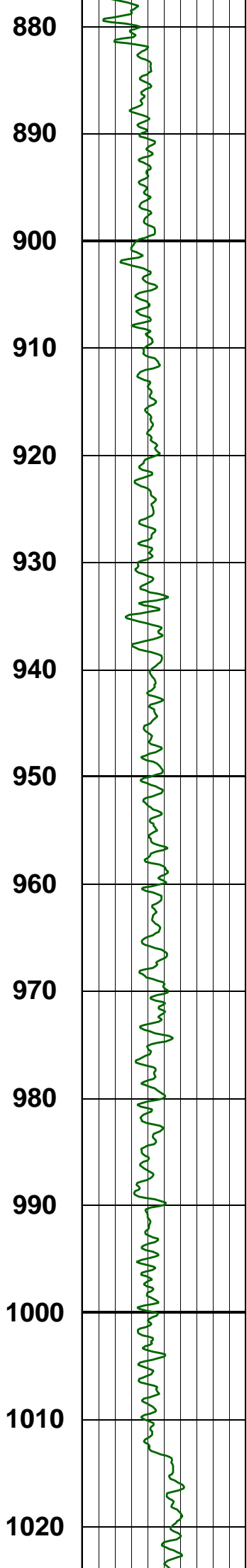
840

850

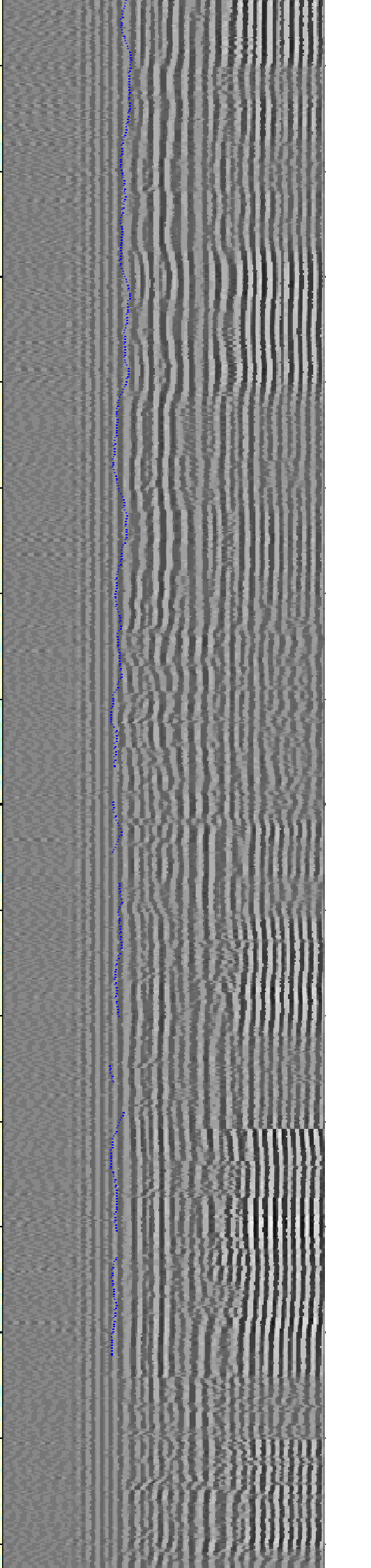
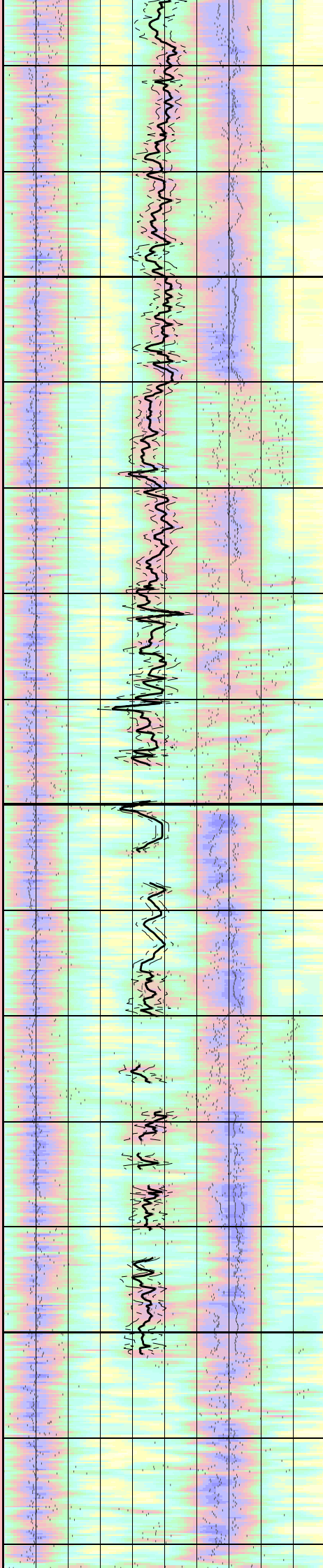
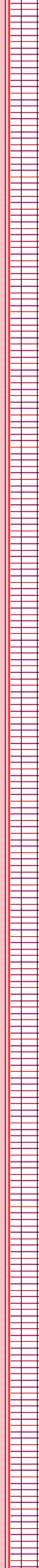
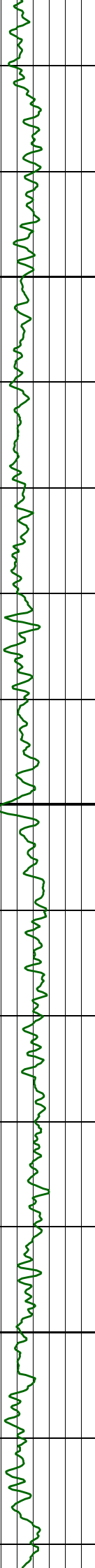
860

870

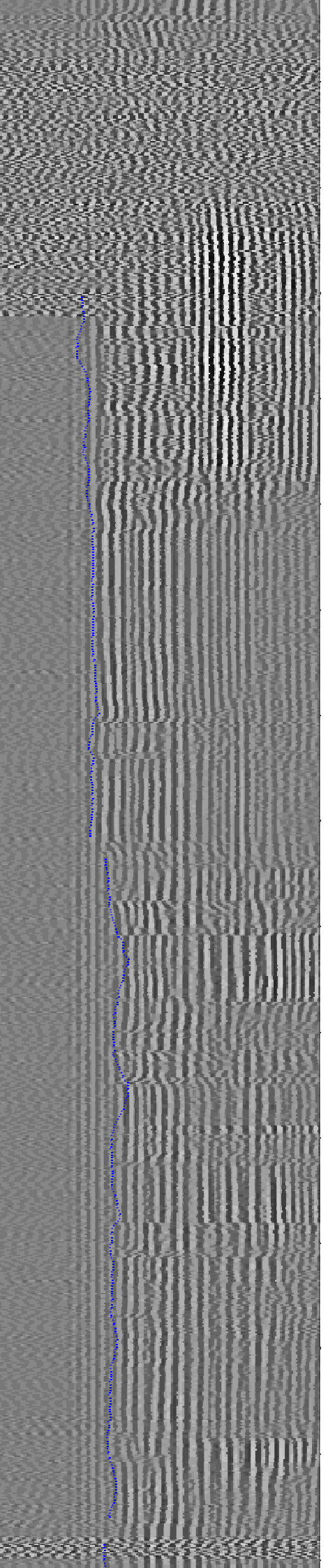
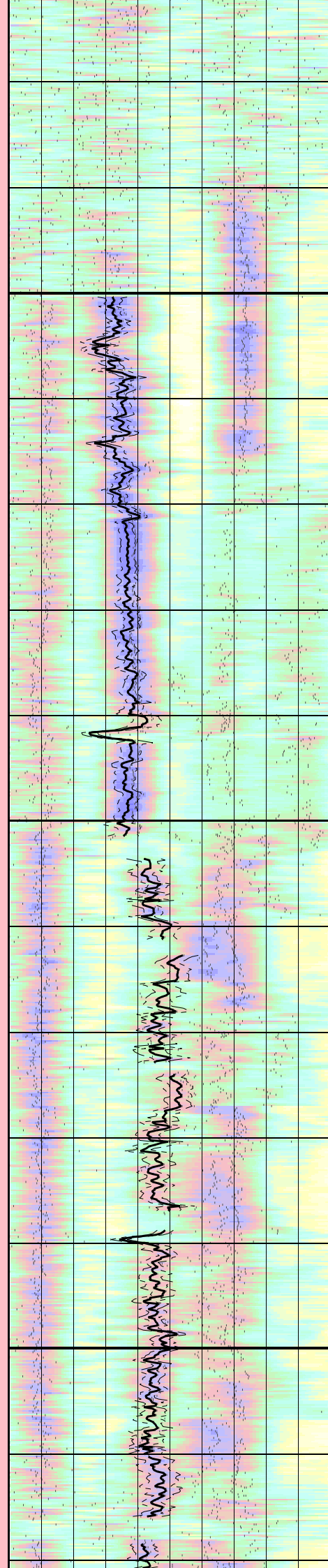
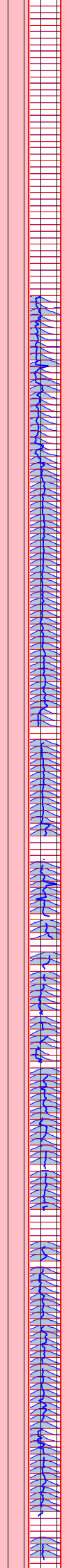
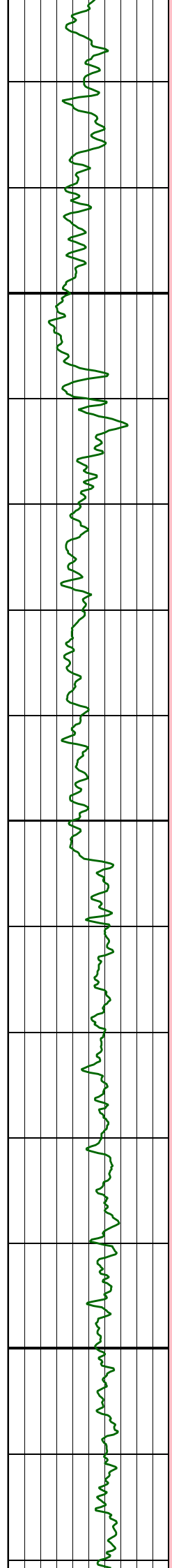


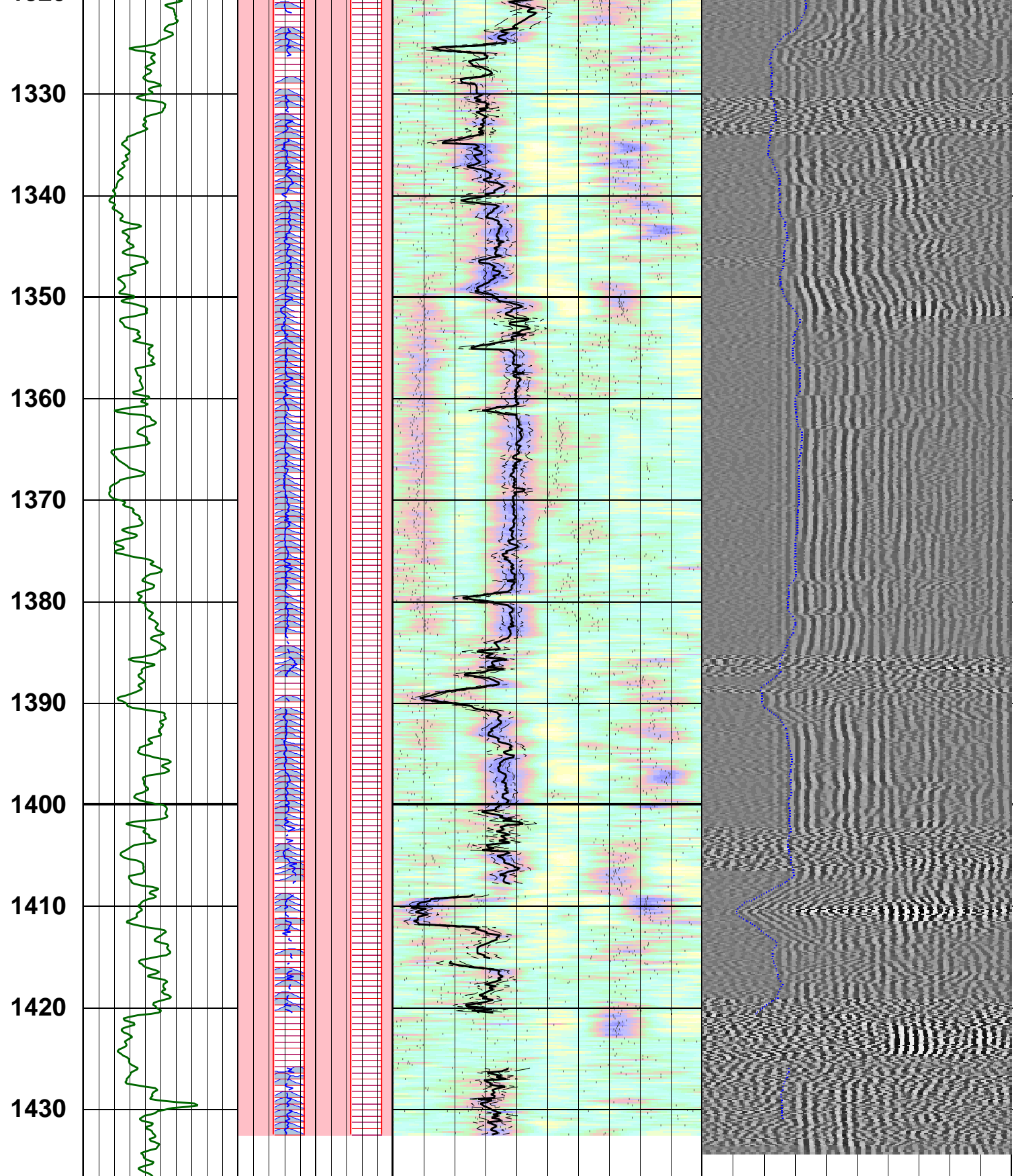


1030
1040
1050
1060
1070
1080
1090
1100
1110
1120
1130
1140
1150
1160
1170



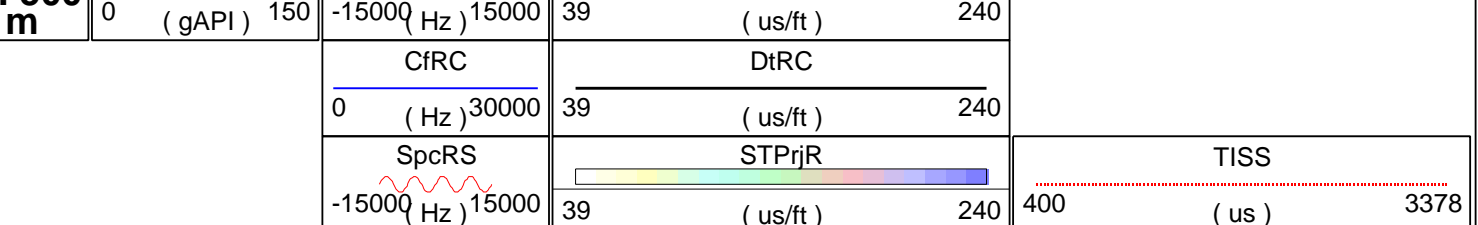
1180
1190
1200
1210
1220
1230
1240
1250
1260
1270
1280
1290
1300
1310
1320

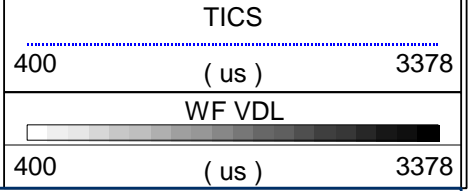
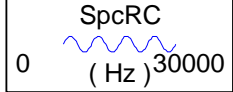




Customized Process: Start Depth (1435.62 m), Stop Depth (775.257 m), Logging Mode (sonicVISION - MPS_WIDE)
 Noise Cut Filtering(No), Casing Cut Filtering(No)
 WF_FLG(1 1 1 1), MUD_TYPE(WBM), DTMUD(190), STCAL(Full Array)
 TRSPAC(3.05714), RRSPAC(0 0.2032 0.4064 0.6096)
 Hole Diameter (no input)

Zoning Guide (DTBC@Run_2;1 (775.106 - 1432.56 m))
 1 : 500 m
 Gamma Ray @ BestDT-3.3.DTRP.CO.MPS_WIDE.ISONIC.SWP.BDT (1432.56 - 775.257 m)





Company: BEACH PETROLEUM LTD
Well: PEEJAY-1
FIELD: WILDCAT
RIG: WEST TRITON
STATE: TASMANIA

Schlumberger

Date Logged: 24-NOV-08 Date Processed: 25-Nov-2008

Elevations: KB: 34.15m GL: -78m
API Number: 08ASQ0031